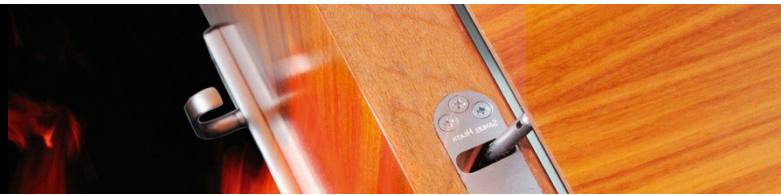


# Data sheet



## I-60-H: Interior 60 minute FRR hinged doorset, single or pair

Our most popular 60 minute FRR interior fire, smoke and acoustic door set, the I-60-H is available in singles or pairs. The door leaf is a solid composite timber core faced with an integral MDF layer (S-CORE). The standard door set is supplied sealer coated on both faces or you can specify a facing and/or kickplate.

- Leaf sizes up to 2200 high x 960 wide per leaf
- Pair leaf sizes up to 2200 high x 380 min to 938 max per leaf
- Thickness 55 mm
- Weight 35.2 kg /m<sup>2</sup>
- Acoustic singles and doubles STC 34

### FACING OPTIONS

- Paint quality factory sealed
- Timber veneer full height
- High pressure laminate partial or full height
- Sheet vinyl to 1000 mm
- 1 mm stainless steel kickplate to 1000 mm – both sides

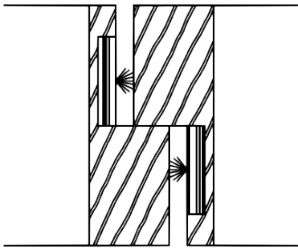
### LEAF EDGE DETAILS

- 7mm hardwood clashing to hinge edge
- 7mm hardwood clashing to leading edge (flush pairs & singles)
- 18mm hardwood clashing to leading edge of rebated pairs

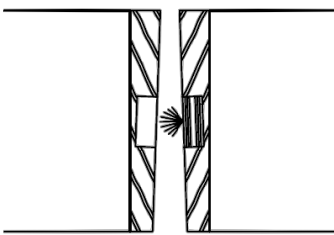
**PAIR MEETING STYLES**

**Timber (the standard option)**

*Rebated*



*Flush*

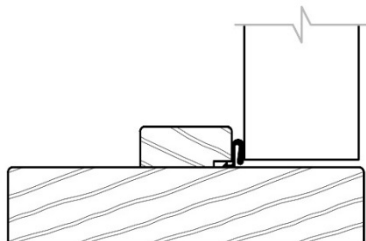


## JAMB TYPES AND PROFILES

32 mm hardwood timber (types 1, 2 & 3), width 92 – 350mm, planted stops (30 x 16), full width available at extra cost.

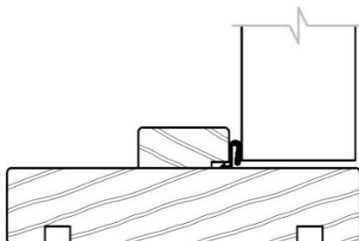
### **T1 – Timber**

*Timber flat for architrave*



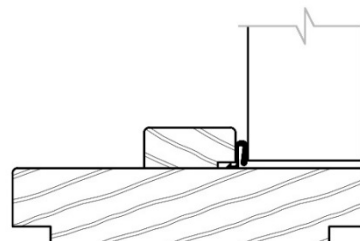
### **T2 – Timber**

*Groove for wall lining to suit  
(12mm reveals)*



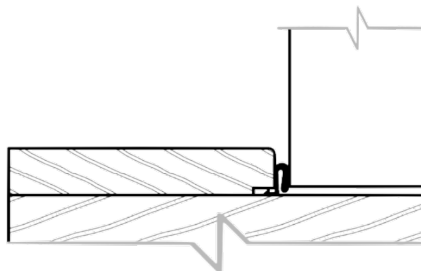
### **T3 – Timber**

*Rebate for wall lining to suit (non-  
standard surcharge may apply)*



### **Timber – Full width planted stop**

*Available for all timber profiles (non  
– standard surcharge applies)*



## APPROVED HARDWARE

The minimum requirement is for a fire door to be self-closing and self-latching. Hardware must be selected from NZ Fire Doors' Approved Hardware list from the column '60 min'. Fitting any hardware that inhibits self-closing or self-latching is not approved by NZS 4520

**IMPORTANT:** Fitting untested or inappropriate hardware may affect the performance of the door and will void the warranty.

